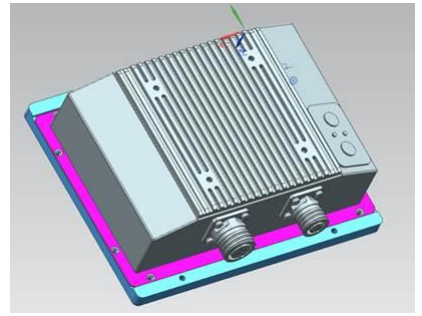


Military LCD Monitor

RML-07W

7" Military Touch Monitor



Specification

System:

- **OSD** : OSD Brightness control/Contrast/Auto adjustment
- **EMI** : EMI filter applied
- **Mechanical** : Alu. Chassis with anti-corrosion chromate coating
- **Mounting** : Panel Mount / VESA Mount
- **Dimensions** : 194 x 140 x 61mm
- **Weight** : 2.5KG
- **Electric proof** : Electronic parts with ePoxy coating
- **Portrait Mode** : Horizontal and Portrait mode supported

Input / Output :

- **DVI** : 1 x DVI-I (D38999 connector)
- **USB Ports** : 1 x USB for touch (D38999 connector)
- **Power** : Wide range 9~36V DC Input (D38999 connector)

Power Specification :

- **Power Input** : 9~36V Isolative DC Input
- **Power Consumption** : 15 watts (typical)

Panel Specification :

- **Size/ Type** : 7" (16:9) TFT LCD
- **Resolution** : 800 x 480
- **Brightness** : 350 (cd/m²)
- **Contract Ratio** : 400 : 1 (typ.)
- **Viewing Angle** : -70~70 (H) ; -55~55 (V)
- **Max. Colors** : 262k
- **Active Area** : 153.6 (H) x 90.0 (V)
- **Glass** : Front anti-EMI glass

Environment Tolerance:

- **Net Weight** : 2.5 KG (Identity)
- **Operating Temp.** : 0 deg. C to 55 deg. C
- **Storage Temp.** : -30 deg. C to 70 deg. C
- **Operating Humidity** : 10% to 95% (Non Condensing)
- **IP65** : Front-IP65
- **Vibration** : MIL-STD-810G Method 514.6C-3
- **Shock** : MIL-STD-810G Method 516.6
- **EMI Compatible** : MIL-STD-461E (RE101, RE102, CE101, CS102, CS114, CS116, RS101, RS103).

Drawings

